

2008 BOARD OF DIRECTORS

Todd Herzog, Chairman of the Board
Ray Cantrell, Chairman-Elect
Elaine Rains, Secretary-Treasurer
Amie Hodges, Immediate Past Chairman

Mary Jane Bell
Rodney Boyd
Sally Brock
Bonnie Collier
Sandra Haynes
Ray Jones
Rickey Minton
Hannah O'Neal
Edwin Partin
Joe Pugh
George Smartt

Royce Davenport, Mayor, City of McMinnville, Ex-officio
John Pelham, Warren County Executive, Ex-officio

CHAMBER STAFF

Alicea Weddington, President
Joyce Lawson, Office Manager

McMinnville-Warren County Chamber of Commerce, Inc.
110 South Court Square, P. O. Box 574
McMinnville, TN 37111-0574
Phone: (931) 473-6611 FAX (931) 473-4741
Email: aweddington@warrentn.com or jlawson@warrentn.com
Website: <http://www.warrentn.com>

McMinnville-Warren County
Chamber of Commerce, Inc.

2008 PROGRAM OF WORK

What the Chamber is . . .

A non-profit organization of voluntary business and professional men and women committed to working together, assisting and promoting its member customers and the community.

Our Mission . . .

To create a positive climate for business growth in Warren County.

How we function . . .

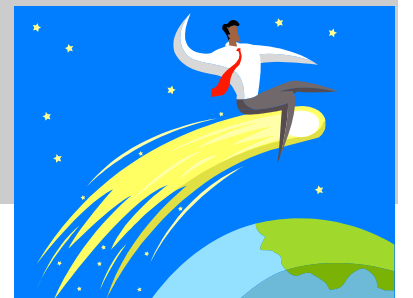
The Chamber works through a committee system of volunteers to accomplish our mission.

Statement

To accomplish the mission of the McMinnville-Warren County Chamber of Commerce, the Board of Directors has adopted the following goals and strategies:

Goals

- To increase Chamber members' involvement in Chamber activities.*
- To establish the Chamber as the promotional arm of the community.*
- To provide members with specific programs and benefits.*
- To identify and develop programs to foster leadership in the community.*
- To create resources to support programs.*



Business Division

Division Director: Todd Herzog

"Fighting for our business"

Strategies:

- Conduct monthly Business Roundtable Action Committee meetings.
- Collaborate with Education Division to expand *Citizens' For Progress* program and new Motlow State Community College grant program for *Factory Automation Work Center*.
- Expand Warren County High School Internship Program launched in 2007 and support addition of new manufacturing program.
- Support Foreign Trade Zone program, once approved.
- Continue sponsorship of Industry Appreciation Day Outing and BRAC High School Invitational Golf Tournament.

Community Division

Division Director: Alicea Weddington & Todd Herzog

"Raising our standards"

Strategies:

- Continue the Three Star Program.
- Continue the Sister Cities Program.
- Promote retiree relocation.
- Promote tourism.

Education Division

Division Director: Bonnie Collier

"Knowledge is king"

Strategies:

- Expand the *Citizens' For Progress* program.
- Support the Motlow State Community College grant program.
- Expand the Warren County High School Internship Program.
- Establish a manufacturing program at Warren County High School.
- Continue to support the Partners in Education Program.

Leadership Division

Division Director: Sandra Haynes

"Veni—Vidi—Vici"

Strategies:

- Strengthen the Leadership Program.
- Strengthen the Youth Leadership Program.
- Establish a Leadership Alumni Program
- Conduct an Autumn Street Fair downtown.

Member Services Division

Division Director: Mary Jane Bell

"Why I belong to the Chamber!"

Strategies:

- Provide networking opportunities such as Business After Hours, New Business Connections, Annual Membership Meeting, and Legislative Breakfast.
- Conduct Red Carpet ceremonies for new members.
- Promote membership to attend Congressman Lincoln Davis' *Grants & Funding* seminar.
- Provide periodic educational workshops.
- Member recognition considerations.

Resource Division

Division Director: Ray Cantrell

"Being fiscally responsible"

Strategies:

- Expand Annual Meeting.
- Conduct the Highland Rim Cycling Classic.
- Explore non-dues resources, including a new "major" fund raiser in 2008.
- Expand advertising revenues, including Chamber *Dispatch*, web cams, printed materials.

Retail Promotion Division

Division Director: Amie Hodges

"Be a Warren County shopper"

Strategies:

- Establish a retail member action committee, similar to BRAC
- Establish a nursery business promotion & publicity program.
- Expand successful Member-to-Member Discount program.